

Interior Design Guidelines

Selina Athens Theatrou

Selina

13.05.2020

INDEX

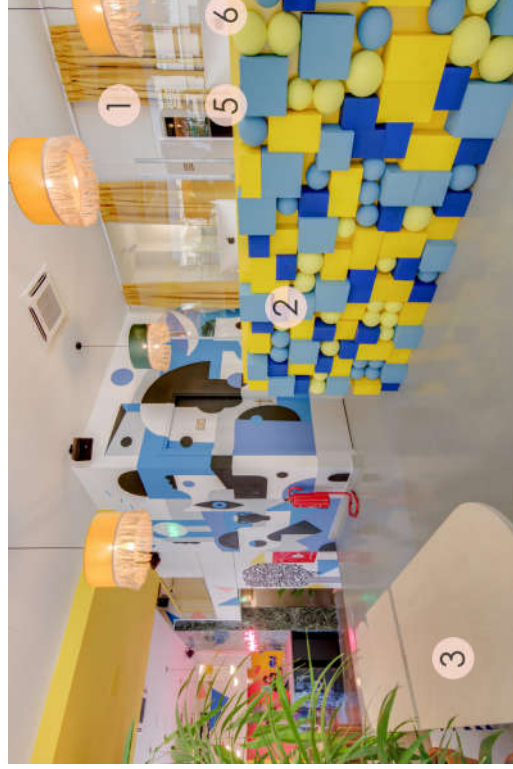
INTRO	3	FAQS	58
DESIGN TEAM	3	ESIGN FAQs	59
INTERIOR DESIGN	4	Design Request for Operative Locations	61
FF&E LIST AND PROVIDERS	5		
COMMON AREAS	20		
Reception	21		
Grab & Go	23		
Mezzanine	26		
Rooftop	28		
Playground	33		
Selina Home	34		
Coworking	36		
Wellness Center	39		
ACCOMMODATIONS	41		
Loft	42		
Private Standard	44		
Private Twin	46		
Hybrid	49		
Dorms	51		
VEGETATION AND CARES	53		
CREATIVE WORKSHOP	55		
ART	56		

Selina

COMMON AREAS



Recepción | Reception

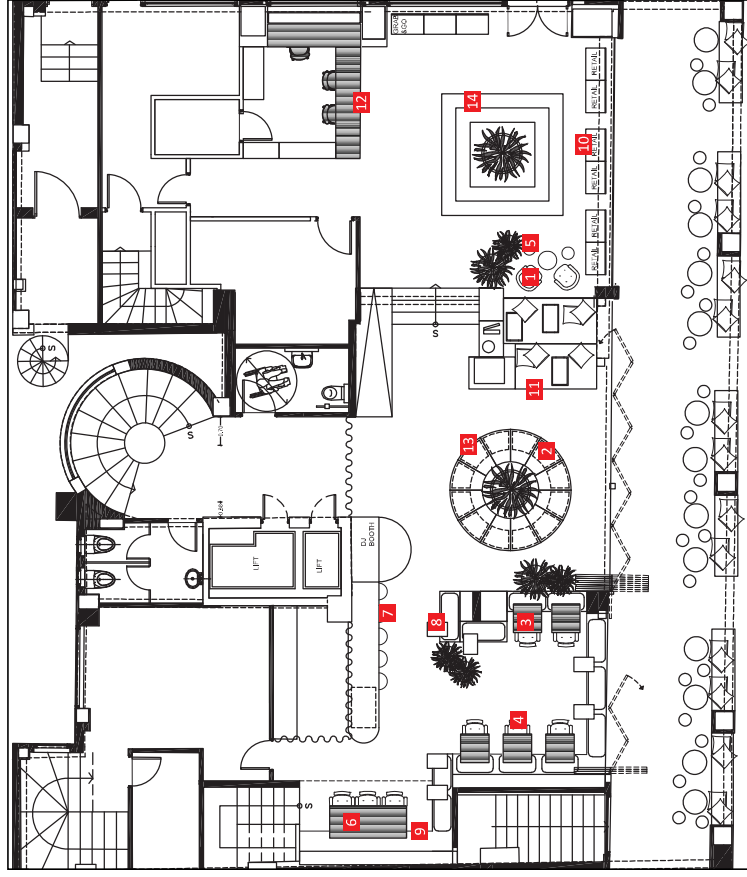


- 1 There is a full height yellow velvet curtain as a backslash for the reception. At typical use it is suggested that the curtains are kept closed in order to offer a unified back for the reception.
- 2 The reception is covered with colored felizol pieces of various shapes
- 3 There are (4) benches in the middle of the reception shaped with modular configuration, linear or square according to operational needs. In either case the (4) plants are located inside the square for rectangular configuration and in-between two rows for linear configuration. These are placed on top of a rectangular rattan carpet.
- 4 There are (8) totems made by workshop used for retail space. (2) of those are considered grab&go type D, which is why they contain the fridge. In between the totems there are pots with plants.
- 5 The reception has (2) lamps, (2) stools
- 6 The part of the reception facing the window it is filled with decorative artificial plants.
- 7 There is a wooden armchair next to the retail area as well as (2) side tables, one of which is also used for storage of magazines etc.
- 8 There are (6) ceramic pots of various sizes as decorative pieces



RECEPTION + GRAB & GO

FURNITURE



WORKSHOP 1
Armchair
Specs: Blue
Source: Inventory
Dim: 50x50x70
QTY. 1

INVENTORY



PROCUREMENT 2
Stool
Specs: wood w/pillow
Source: Mexil
Dim: 45x50x50
QTY. 12

INVENTORY



WORKSHOP 3
Dining Table
Specs: Wood
Source: Inventory
Dim: 70x70cm
QTY. 5

INVENTORY



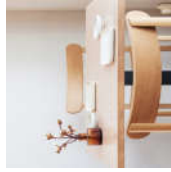
PROCUREMENT 4
Dining chair
Specs: Wood
Source: Drakopoulos
Dim:
QTY. 8

INVENTORY



PROCUREMENT 5
Side table
Specs: ceramic
Source:
Dim: 35-45cm D 45-50H
QTY. 2

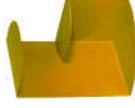
INVENTORY



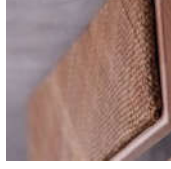
PROCUREMENT 6
Dining Table
Specs: metal base in pink w/wood top
Source: Drakopoulos
Dim: 190x80cm
QTY. 1



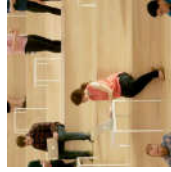
PROCUREMENT 7
Bar stool
Specs: in wood
Source: Mexil
Dim:
QTY. 4



WORKSHOP 8
Side C table
Specs: in yellow
Source:
Dim: 35cmx50cm
QTY.6



PROCUREMENT 9
Bench
Specs: wood w/rattan pillows
Source: Pafos
Dim: See dwg M3
QTY. 7



PROCUREMENT 11
Steps
Specs: wood steps
Source: Pafos
Dim: See dwg M6
QTY.1



WORKSHOP 12
Reception & Grab/go
Specs: Upcycled materials
Source:
Dim: See dwg M2 & M11
QTY.2



PROCUREMENT 13
Grab & Go modular table
Specs: mdf in natural color
Source: Pafos
Dim: See dwg M13
QTY.1.

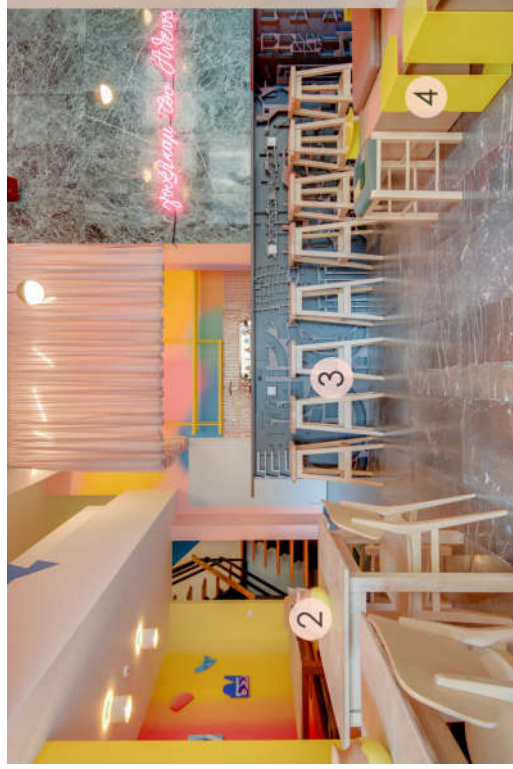


WORKSHOP 14
Large furniture
Specs: mdf w/some pieces colored light blue
Source:
Dim: See dwg W2
QTY.1

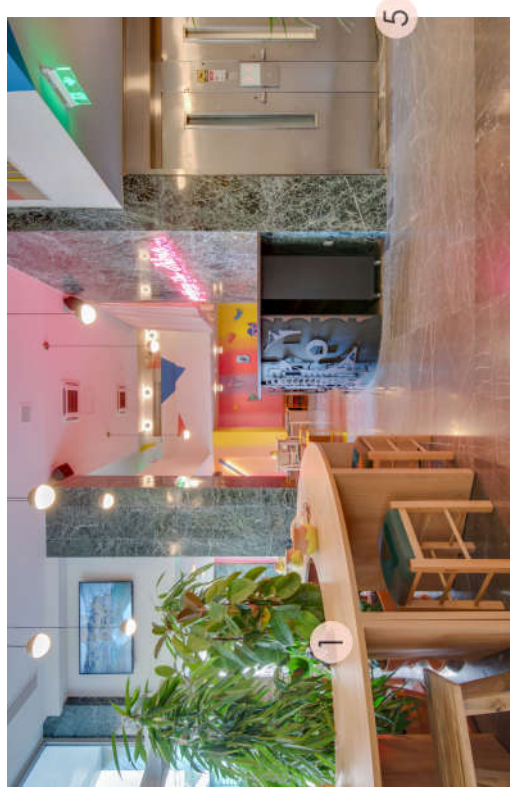


WORKSHOP 10
Retail totams
Specs: upcycled metal totams
Source:
Dim: See dwg W4
QTY.7

Grab & Go

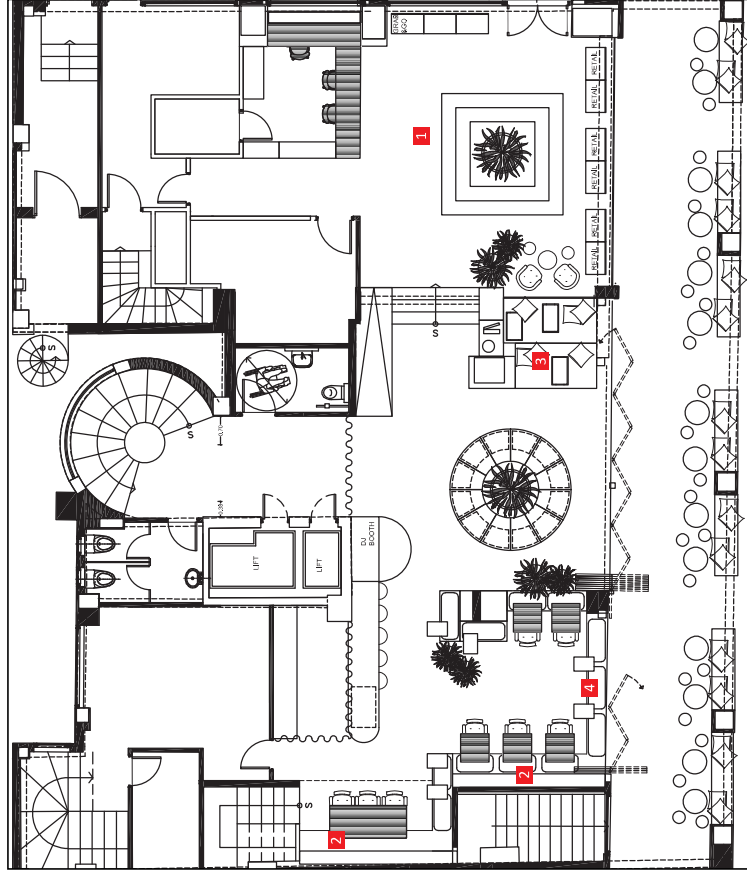


- 1 There is a modular wooden table of 10 seats that can be re-configured in various shapes according to operational needs. There are (3) large plants inside the circular configuration with assorted low wooden stools or fabric pillow/wooden legs
- 2 There are ceramic pots positioned at the center of every wooden table
- 3 The bar has (8) wooden high stools to be positioned at the bar to be positioned linearly with relative space in between
- 4 There are (6) yellow side tables & (5) low wooden stools with fabric top to be used for extra seating along the benches. Each bench has a rattan brown rectangular pillow to accommodate (2) people. There also (2) decorative pillows of pink & green velvet color as well as (4) grey pillows that serve as backplash for the benches
- 5 There are (2) large plants across the elevator



RECEPTION + GRAB & GO

DECOR



PROCUREMENT 1
 Carpet
 Specs: textured brown
 Source: Veranda
 Dim: 140x200
 QTY: 1

INVENTORY



PROCUREMENT 2
 Pillow
 Specs: Yellow cotton
 Source: Yellow pillows
 Dim: 40cm diameter
 QTY: 6

INVENTORY



PROCUREMENT 3
 Pillow
 Specs: Pink pattern
 Source: Yellow pillows
 Dim: 50x50cm
 QTY: 5

INVENTORY



PROCUREMENT 4
 Pillow
 Specs: Rattan pillow
 Source: Yellow pillows
 Dim: 40cm diameter
 QTY: 5

INVENTORY

RECEPTION + GRAB & GO

PLANTS



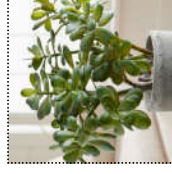
PROCUREMENT

Plant
 Specs: Fikos Benjamin
 Source: Antemisaris
 Dim: 20cm
 QTY: 3



PROCUREMENT

Plant
 Specs: Yucca
 Source: Antemisaris
 Dim:
 QTY: 3



PROCUREMENT

Plant
 Specs: jade (artificial)
 Source: Ikea
 Dim: 20cm diameter
 QTY: 7



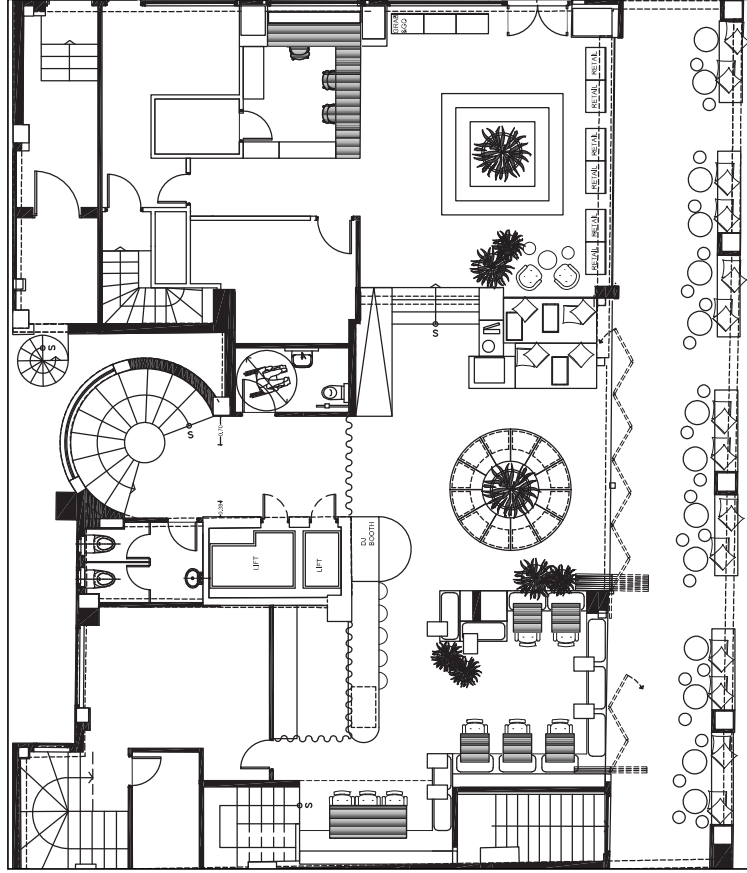
PROCUREMENT

Pot
 Specs: Colored pattern
 Source: ANTEMISARIS
 Dim: 30cm diameter
 QTY: 7



PROCUREMENT

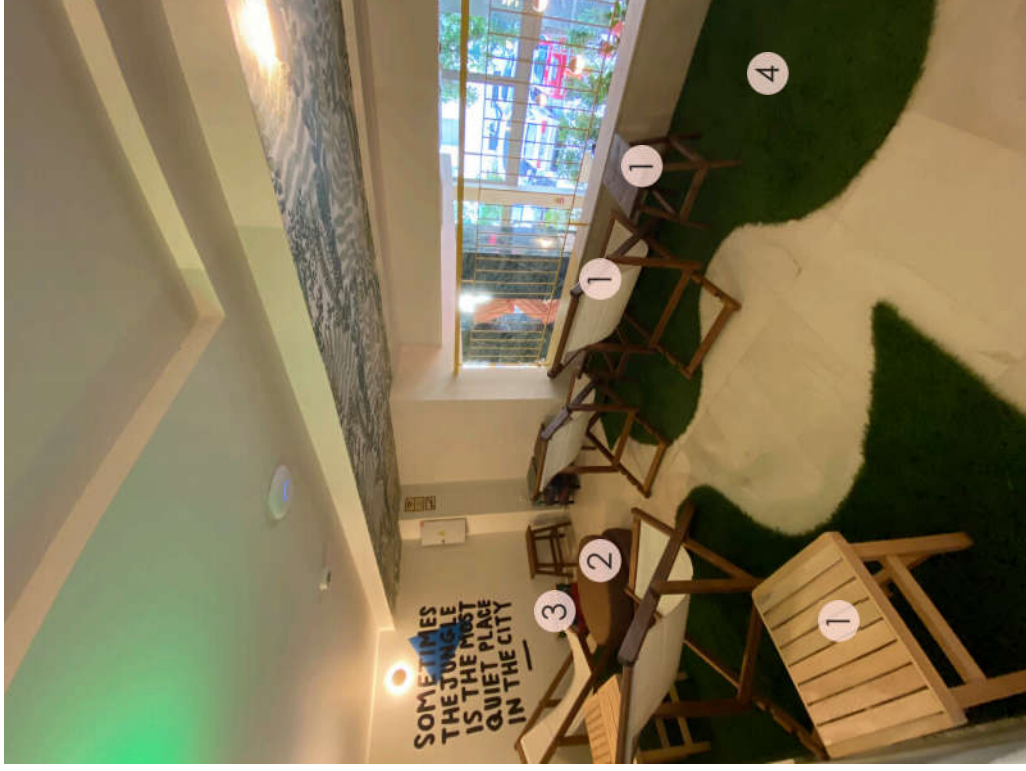
Pot
 Specs: Colored blue
 Source: ANTEMISARIS
 Dim: 100cm diameter
 QTY: 3



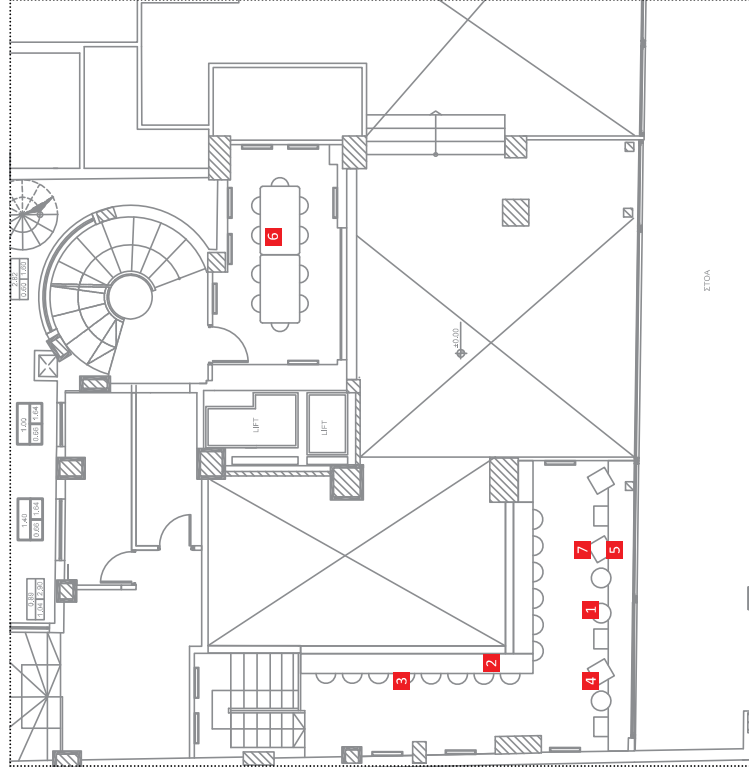
PROCUREMENT

Pot
 Specs: Colored blue
 Source: ANTEMISARIS
 Dim: 50cm diameter
 QTY: 5

Mezzanine



- 1 There are (5) lounge chairs with (7) side tables
- 2 (2) large pillows
- 3 (5) stools
- 4 (2) artificial grass carpets



PROCUREMENT 1
Chair
Specs: wood/metal stool
Source: Drakopoulos
Dim: 37cm D
QTY:10



PROCUREMENT 2
Counter top
Specs: mdf
Source: Pafos
Dim: See dwg M4
QTY:2



PROCUREMENT 3
Bar stool
Specs: in wood
Source: Mexil
Dim:
QTY: 14



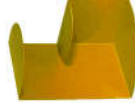
PROCUREMENT 4
Stool/side table
Specs: yellow fabric
Source: Inart
Dim: 42x42x38cm
QTY: 6



PROCUREMENT 5
Bench
Specs:bench w/mdf & melamine finish with wicker
Source: Pafos
Dim:See dwg M4
QTY: 1



WORKSHOP 6
Long table
Specs: wood table in yellow
Source:
Dim: WxDxH 90x300x75cm
QTY:1



WORKSHOP 7
Side C table
Specs:upcycled wood
Source:
Dim: 35cmx50cm
QTY:6

DECOR

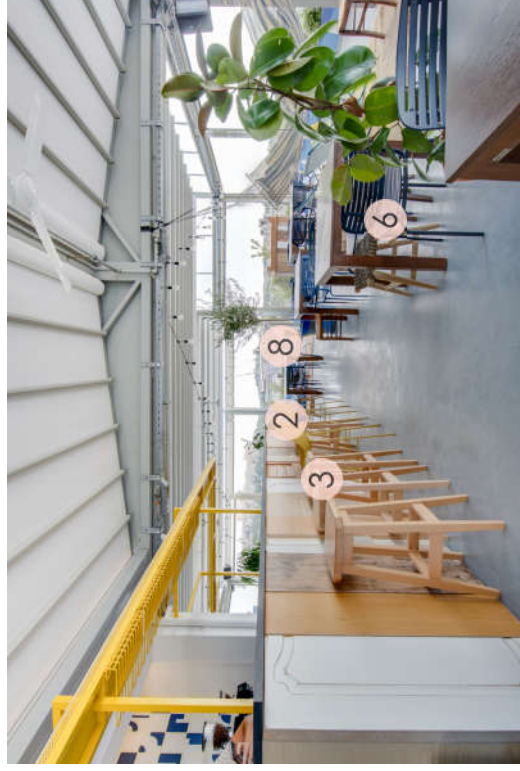


PROCUREMENT
Pillow
Specs: Yellow & brown cotton
Source:Yellow pillows
Dim:40x90cm
QTY: 11



PROCUREMENT
Soft geometric shapes
Specs: afrolex in color
Source: mypouf.gr
Dim: Various
QTY: 30

Rooftop

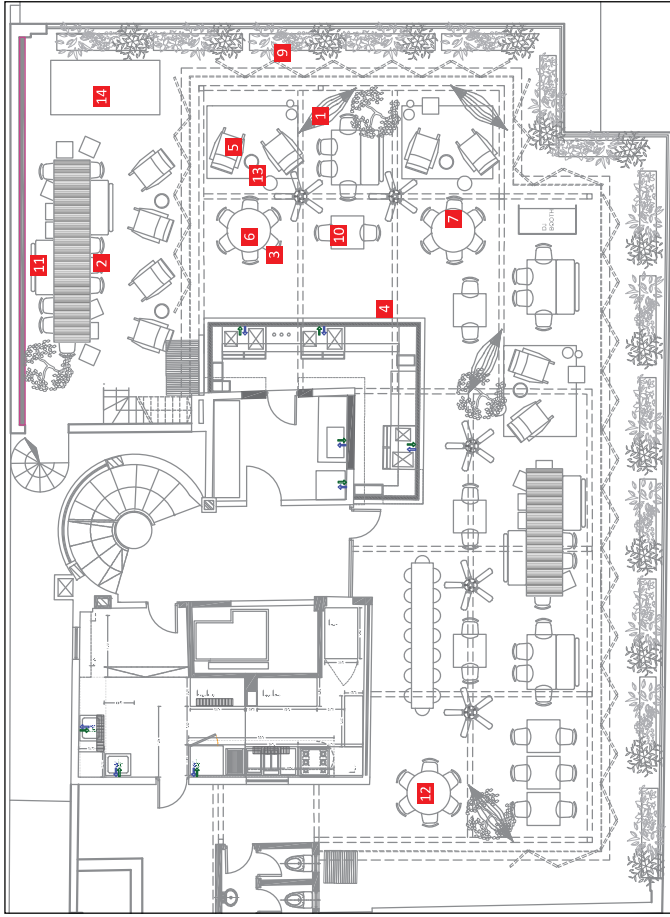


- 1 (10) lounge chairs & poufs to be positioned according to plan
- 2 (20) stools in yellow mixed with the wooden stools placed at the bar & wooden table made by workshop
- 3 (10) stools in wood
- 4 (4) hammocks to be positioned according to plan
- 5 (18) light blue armchairs combined with wooden tables to be positioned according to plan
- 6 (42) blue chairs combined with wooden tables to be positioned according to plan mixed with rattan stools of various types
- 7 (4) rattan carpets to be positioned according to plan
- 8 various rattan baskets as decoratives at the green artificial wall
- 9 (10) large plattens to be positioned according to plan
- 10 (20) rattan low stools to be positioned according to plan at the large common tables as well as the rectangular ones with the colored blue chairs



ROOFTOP

FURNITURE



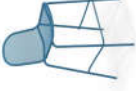
PROCUREMENT 1
Hammock
Specs: Fabric
Source: Inart
Dim: 69x60x80cm
QTY: 4



PROCUREMENT 2
Chair with arms
Specs: Metal blue
Source: Mexil
Dim: 69x60x80cm
QTY: 18



PROCUREMENT 3
Chair stackable
Specs: Metal blue
Source: Mexil
Dim: 50x54x85cm
QTY: 36



PROCUREMENT 4
High Stool
Specs: Wood
Source: Mexil
Dim: 56x61x110cm
QTY: 30



PROCUREMENT 5
Lounge
Specs: metal base & colored blue/yellow fabric
Source: Mexil
Dim: 91x75x105cm
QTY: 10



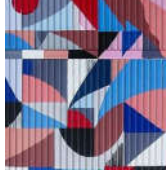
PROCUREMENT 6
Dining Table
Specs: Wood
Source: Mexil
Dim: D 120cm
QTY: 1



PROCUREMENT 7
Dining Table
Specs: Wood
Source: Mexil
Dim: D 120cm
QTY: 1



PROCUREMENT 8
Dining table
Specs: Wood (outdoor)
Source: Mexil
Dim: 90x90x75cm
QTY: 7



ART/CONSTRUCTION 9
Metal base
Specs: painted by artist
Source: Mexil
Dim: See dwg M11
QTY: 1



PROCUREMENT 11
Dining sofa
Specs: brown metal frame sofa w/blue pillows
Source: Mexil
Dim: 134x75x78cm
QTY: 7



PROCUREMENT 12
Dining Table
Specs: Wood
Source: Mexil
Dim: D 120cm
QTY: 1



PROCUREMENT 13
Traditional greek stool re-designed
Specs: Blue & natural painted wood w/fabric seat
Source: Inomo
Dim: 45x45x50
QTY: 15



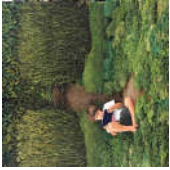
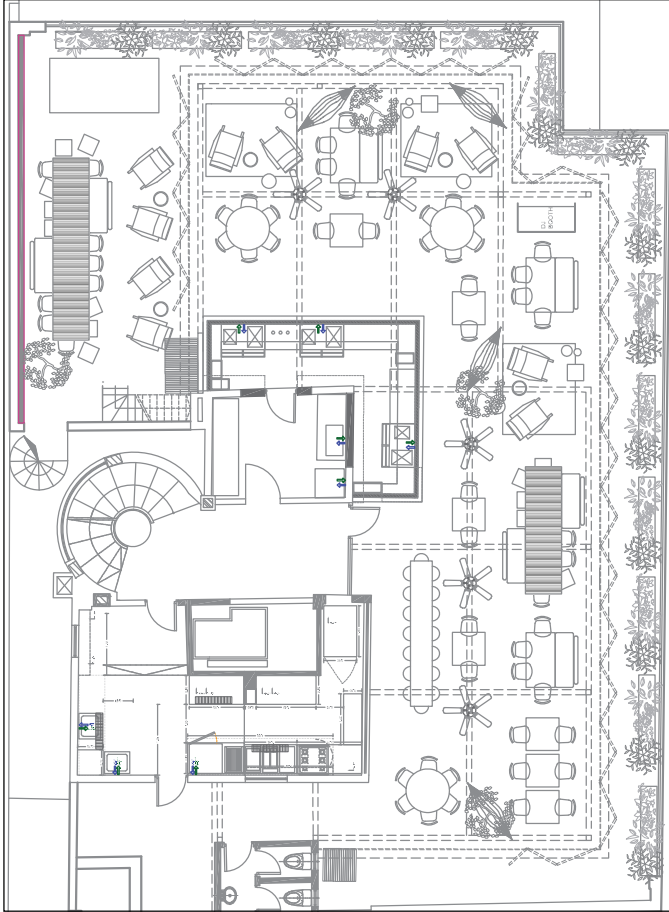
WORKSHOP 14
Reception modular table
Specs: mdf w/some pieces colored light blue
Source: Mexil
Dim: See dwg W2
QTY: 1



PROCUREMENT 10
Dining table
Specs: Wood (outdoor)
Source: Mexil
Dim: 120x80x75cm
QTY: 3

ROOFTOP

DECOR



PROCUREMENT
Green carpet
Specs: artificial plants
Source: Artemisaris
Dim: 40x40cm tiles
(140x200)
QTY: 3



PROCUREMENT
Ceiling fan
Specs: wood wings/metal base
Source: Beacon
Dim: 1.1m diameter
QTY: 5



PROCUREMENT
Seat Pillows
Specs: Patterned blue pillow
Source: yellow pillow
Dim: 25x25cm
QTY: 2



PROCUREMENT
Floor pillows
Specs: Outdoor pillows
Source: yellow pillow
Dim: Various
QTY: 6



ART
Upcycled found pieces
Specs: Hanging
Source: Estia
Dim: 30cm D
QTY: 15



PROCUREMENT
Basket
Specs: Brown basket
Source: Estia
Dim: 50x50cm
QTY: 3



PROCUREMENT
Seat Pillows
Specs: Yellow pillow
Source: yellow pillow
Dim: 25x25cm
QTY: 2



PROCUREMENT
Greek cheese tin box redesigned as side table
Specs: blue traditional pattern with upcycled marble filling
Source: Estia
Dim: 23.5x23.5x40cm
QTY: 15



PROCUREMENT
Seat Pillows
Specs: Blue pillow
Source: yellow pillow
Dim: 25x25cm
QTY: 2

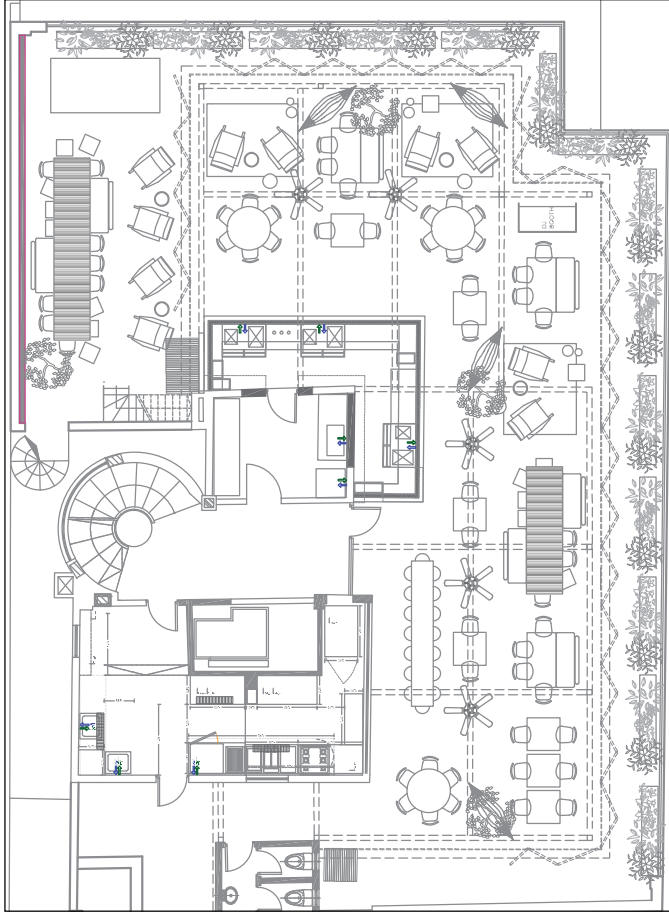


PROCUREMENT
Low side table & pots
Specs: Color brown
Source: Veranda
Dim: D45 H50
QTY: 15

INVENTORY

ROOFTOP

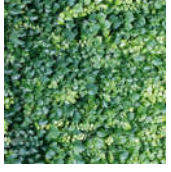
PLANTS



PROCUREMENT
Plant
Specs: Olive trees
Source: Antemisar
Dim: 3
QTY: 3



PROCUREMENT
Plant
Specs: Myrtle
Source: Antemisar
Dim: 3
QTY: 3



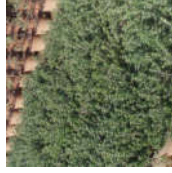
PROCUREMENT
Wall
Specs: Artificial wall
Source: Ikea
Dim: 20cm diameter
QTY: 5



PROCUREMENT
Plant
Specs: Rosemary
Source: Antemisar
Dim: 3
QTY: 3



PROCUREMENT
Plant
Specs: Lavender
Source: Antemisar
Dim: 3
QTY: 3



PROCUREMENT
Plant
Specs: Vestrisia
Source: Antemisar
Dim: 3
QTY: 3



PROCUREMENT
Plant
Specs: Lemon tree
Source: Antemisar
Dim: 3
QTY: 3



PROCUREMENT
Plant
Specs: Eleagnus
Source: Antemisar
Dim: 3
QTY: 3



PROCUREMENT
Pot
Specs: Colored pattern
Source: ANTEMISARIS
Dim: 50cm diameter
QTY: 3

Cinema

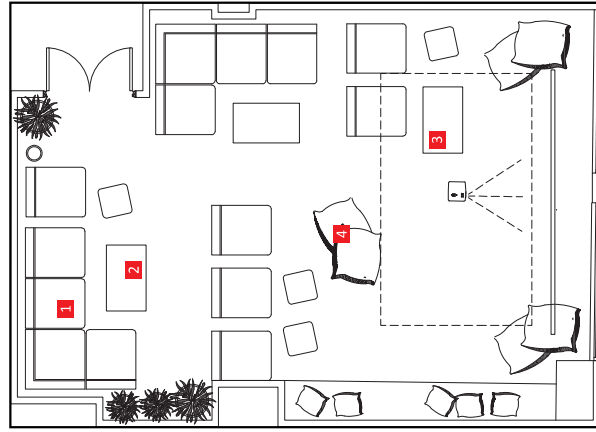


- 1 There are (10) armchairs, (6) poufs, (2) wooden tables made by workshop, (4) felizol pieces used as side tables, (1) large piano, (2) vintage furniture & (4) vintage suitcases of various colors



MULTIPURPOSE ROOM

FURNITURE



OPT A
lounge seating used
for cinema & lounge
seatingn to be stored @
offices



PROCUREMENT 1
Armchair
Specs: Blue
Source: Mexil
Dim: 75x90x75cm
QTY: 10

DECOR



PROCUREMENT
Pillows
Specs: Yellow pillow
Dim: 25x25cm
QTY: 5



WORKSHOP 2
Coffee table
Specs: blue metal legsw w/
painted top
Source:
Dim: 100x50x45cm
QTY: 3



PROCUREMENT
Pillows
Specs: Yellow pillow
Dim: 25x25cm
QTY: 5



PROCUREMENT 3
Haderslev pouf
Specs: Blue
Source: Mexil
Dim: 45x45cm
QTY: 4



ART
Greek masks
Specs: blue stucco or paper
Source:
Dim: 35x35cm
QTY: 6



PROCUREMENT 4
Pouf
Specs: Blue
Source: Yellow pillow
Dim: 60x60cm
QTY: 6

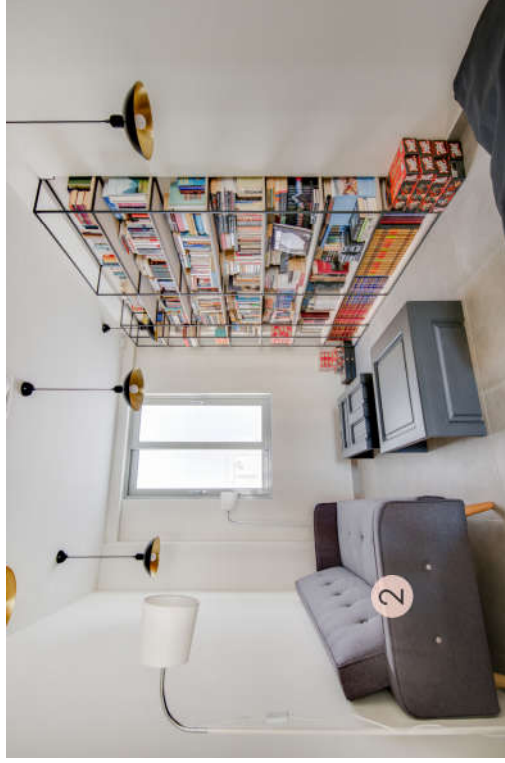
Selina Home

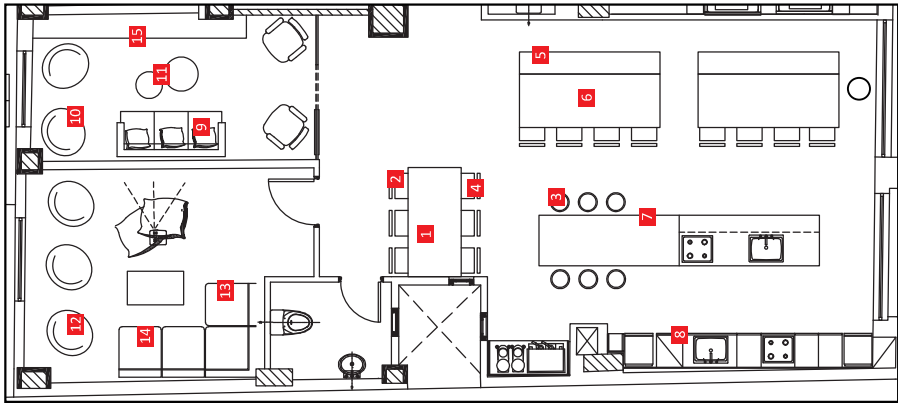


1 There are (8) chairs in total split equally between the (2) large tables, along with the (2) side benches made by workshop

2 In the library there are: (1) grey sofa, (2) side tables made by workshop, (2) large pouf

3 In the cinema there are: (1) green sofa, (2) side tables made by workshop, (3) poufs, (2) armchairs, (1) vintage credenza





PROCUREMENT 1
Table
Specs: Mexil
Source: Mexil
Dim: 90x200x75cm
QTY. 1



PROCUREMENT 2
Chairs
Specs: Assorted types in wood
Source: 2nd hand store
Dim: 45x50x90cm
QTY. 14



PROCUREMENT 3
High Stools
Specs: Wood in natural color
Source: Mexil
Dim: 45x50x90cm
QTY. 6



WORKSHOP 4
Low Stools
Specs: Vintage wood stools
Painted in yellow
Source: 2nd hand store
Dim: 45D 50Hcm
QTY. 4



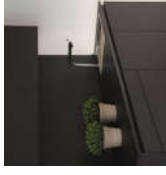
WORKSHOP 5
Wooden bench
Specs: See dwg W39
Source: See dwg W39
Dim: 230x40
QTY. 2



WORKSHOP 6
Wooden table
Specs: See dwg W38
Source: See dwg W38
Dim: 250x90
QTY. 1



PROCUREMENT 7
Kitchen counter
Specs: See Dwg M10
Source: Pafos
Dims: See Dwg M10
Qty: 1



PROCUREMENT 8
Kitchen
Specs: See Dwg M8-9
Source: Pafos
Dims: See Dwg M8-9
Qty: 2



WORKSHOP/ART 11
Coffee table
Specs: Wood top w/ geometric shapes painted black
Dim: 100x50x45
QTY. 2



PROCUREMENT 12
Bean Bag
Specs: Yellow pillow
Dim: TBD
QTY.4



PROCUREMENT 13
Armchair
Specs: Velvet brown
Source: Inventory
Dim: 40x40x75cm
QTY. 2



PROCUREMENT 14
3 seater Couch
Specs: w/patches
Source: 2nd hand store
Dim: TBD
QTY. 1



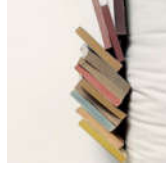
PROCUREMENT 9
Couch
Specs: Black fabric
Source: Inart
Dim: 168x70cm
QTY. 1



PROCUREMENT 10
Pouf
Specs: black fabric
Source: Inart
Dim: 60x60x45cm
QTY. 2



WORKSHOP 15
Library
Specs: Black metal
Dim: 260x35x190
QTY. 1



PROCUREMENT
Used books
Specs: for Library
Source:
Dim:
QTY. 800

Cowork



1 In the lounge area there are: (1) couch, (2) armchairs, (2) large poufs, (1) carpet, (1) side table, (2) large pots with plants



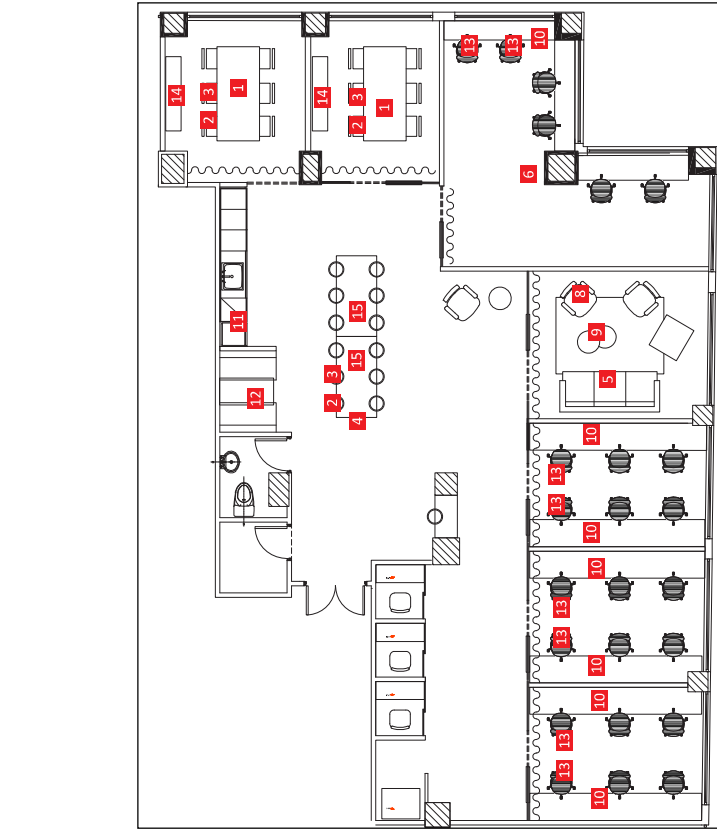
2 In the cowork common area there are: (2) large carpets, (1) booth, (2) large wooden tables made by workshop, (2) large pots, (1) pouf. At the back there is also one large table for the printer made by workshop.



3 In the cowork offices there are: one lamp for every desk space, (1) chair, (1) storage space



4 In the phone booths there are: (1) wooden side table, (1) wooden stool



WORKSHOP 1
Meeting room table
Specs: Wood w/metal base painted red/pink
Dims: 90x250x75cm
See W27
Qty: 2



PROCUREMENT 2
School chair
Specs: Red stackable
Source: Drakopoulos
Dim: 47x43x83cm
QTY: 6



PROCUREMENT 3
School chair
Specs: Wood stackable
Source: Drakopoulos
Dim: 47x43x83cm
QTY: 6



PROCUREMENT 4
Stackable stools
Specs: Wood natural color
Source: Mexil
Dim: 400x50Hcm
QTY: 6

INVENTORY



PROCUREMENT 6
Stool/side table
Specs: pink fabric w/storage
Source: Inart
Dim: 37x37x39cm
QTY: 2



PROCUREMENT 7
Meeting chair
Specs: Odger beige
Source: Ikea
Dim: 45x68x90cm
QTY: 12



PROCUREMENT 8
Armchair
Specs: Red velvet
Source: Grannys house
Dim: 70x65x57cm
QTY: 2



PROCUREMENT 10
Cowork table
Specs: Wood w/colored melamine finish
Source: Pafos
Dims: See dwg M17
Qty: 6



WORKSHOP 9
Side table
Specs: wood painted
Source:
Dim: 30x40x50cm
QTY: 2



PROCUREMENT 11
Kitchen
Specs: Wood colored
Source: Pafos
Dims: See dwg M10
Qty: 1



WORKSHOP 12
Booth
Specs: Wood in natural finish
Dims: See dwg D31
Qty: 1



PROCUREMENT 14
Cabinet
Specs: Wood natural color
Source: 2nd hand store
Dim: 35x165x75cm
QTY: 2

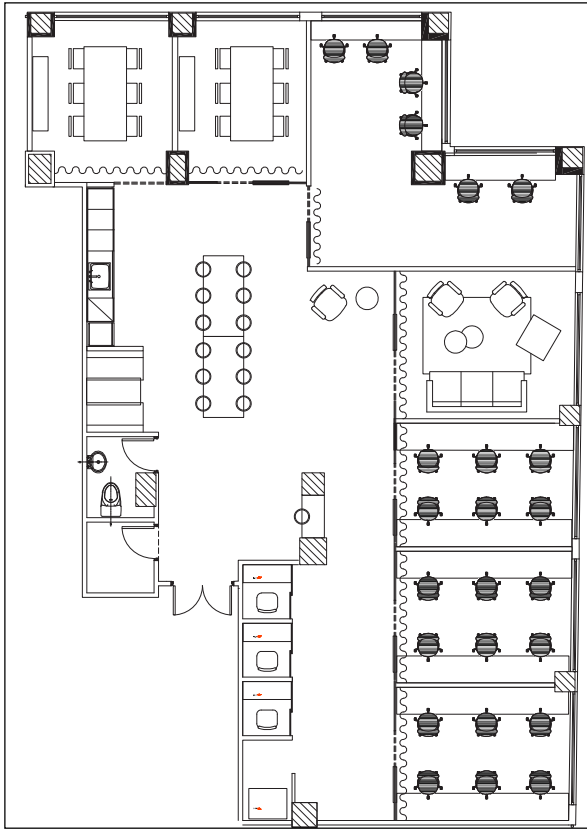


WORKSHOP 15
Central table
Specs: Upcycled doors w/resin & upcycled metal base painted red/pink
Dims: 90x250x75cm
See W27
Qty: 2



PROCUREMENT 5
Dining sofa
Specs: brown metal frame sofa w/blue pillows
Source: Grannys house
Dim: 211x158x83cm
QTY: 2





DECOR



PROCUREMENT

Seat Pillows
 Specs: Pink geometric pattern
 Source: yellow pillow
 Dim: 25x25cm
 QTY: 2



ART

Portraits of Greek entrepreneurs
 Specs: mural art
 Dim: 42x59.4cm
 QTY: 14



ART/PROCUREMENT

Gypsum greek decorative
 Specs: gypsum pink & blue
 Source: Grapsas
 Dim: 5x40cm
 QTY: 40

PLANTS



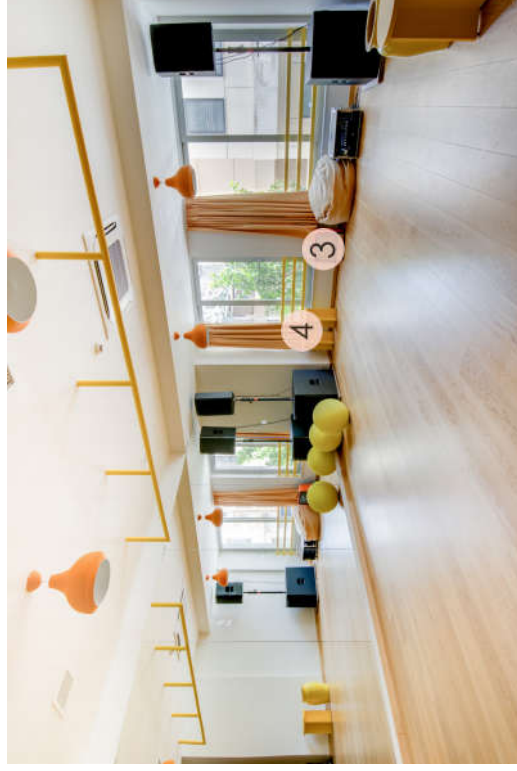
PROCUREMENT

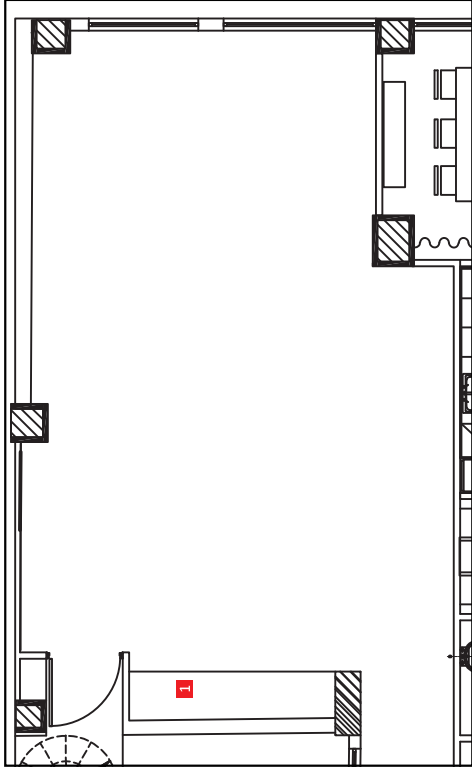
Plants in color @ booth
 Specs: Artificial plants
 Source: Antemisarlis
 Dims: TBD
 Qty: 1

Wellness



- 1 There are (3) large carpets
- 2 (2) yellow pots
- 3 (1) vintage Tv
- 4 (5) side tables
- 5 (1) wooden paravan
- 6 (6) felizol pieces used for storage



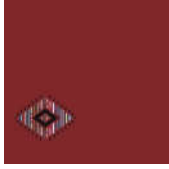


PROCUREMENT 1
 Wooden Cabinet
 Specs: in yellow melamine
 Source: Pafos
 Dim: L 340x45x75cm
 QTY. 1

DECOR



PROCUREMENT
 Floor Pillow
 Specs:
 Source: Artekko
 Dim:
 QTY.5



PROCUREMENT
 Carpet
 Specs:
 Source: Veranda
 Dim: 140x200
 QTY. 3



PROCUREMENT
 Greek objects painted
 Specs: Gypsum object
 Source: Lazarakis
 Dim: D 35 H50
 QTY. 2



WORKSHOP
 Paravan w/ wooden doors
 Specs: Upcycled doors
 Source:
 Dim: Various
 QTY. 1



PROCUREMENT
 Soft geometric shapes
 Specs: afrolex in color
 Source: mypouf.gr
 Dim: Various
 QTY. 6



PROCUREMENT
 side table
 Specs: yellow
 Source: Pafos
 Dim: 30x40x50
 QTY. 4



PROCUREMENT
 Vintage TV
 Specs: in orange color
 Source: Granny's house
 Dim:
 QTY. 1

Selina

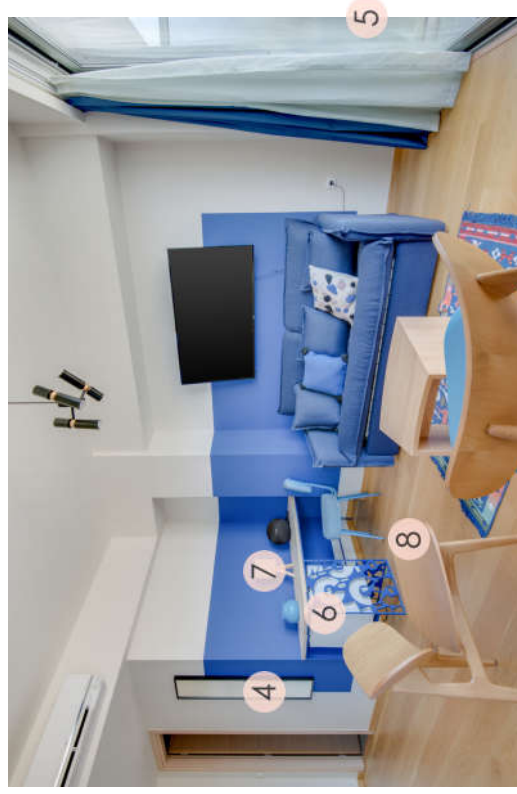
ACCOMODATION

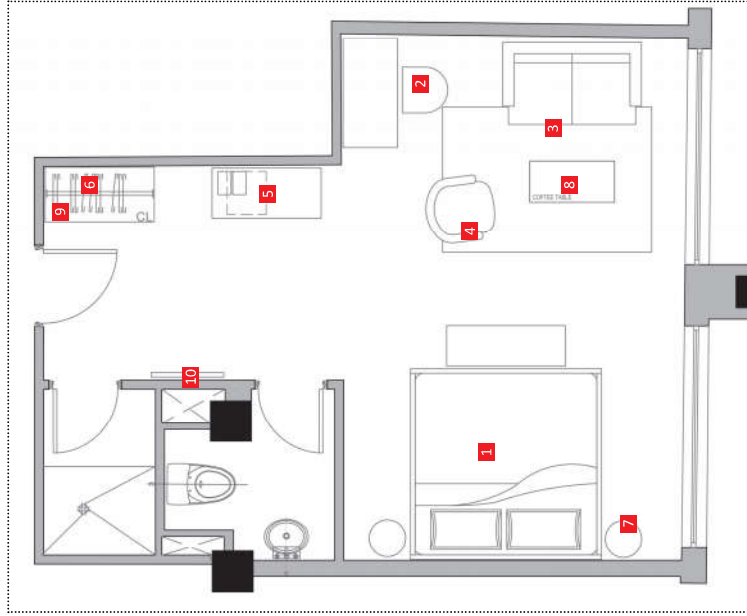


Loft



- 1 There are (2) blue pots with blue painted wooden top as side tables to be positioned according to plan
- 2 (2) decorative pillows at the bed & (5) at the sofa
- 3 (1) blue carpet that can be placed on either side, & a secondary smaller carpet for the living room area to be placed below the side table. Suggested side is the one shown at the photograph
- 4 There is one full height mirror, closet, suitcase rack, chair & decorative tray to be positioned according to plan
- 5 In the cases where there is a balcony there are (2) lounge chairs, with one low wooden side table in between & (2) chairs (1) table for dining, to be positioned according to plan
- 6 (1) large table which includes a fridge made by workshop to be positioned according to plan
- 7 (1) table lamp, with speakers & a coffee machine
- 8 (2) armchairs & (1) wooden side table to be positioned according to plan





PROCUREMENT 1
Twin beds
Specs: light wood
Source: Drakopoulos
Dims: for mattress 200x200
Qty: 8



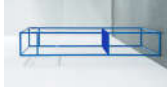
PROCUREMENT 2
Desk chair
Specs:
Source: Drakopoulos
Dim: TBD
QTY: 8



PROCUREMENT 3
Sofa bed
Specs:
Source: Woodwell
Dim:
QTY: 8



PROCUREMENT 4
Armchair
Specs: Wood in natural color
Source: Mexil
Dim: 70x65x57cm
QTY: 8



WORKSHOP
Clothes rack w/desk
Specs: blue painted
Source: Drakopoulos
Dim: 130x50x210
QTY: 8



PROCUREMENT 6
Luggage rack
Specs:
Source:
Dim:
QTY: 8



PROCUREMENT 7
Side table
Specs: blue plaster
Source:
Dim: D 35 H50
QTY: 16



PROCUREMENT 8
Greek cheese tin box redesigned as side table
Specs: blue traditional pattern with upcycled marble filling
Source:
Dim: 23.5x23.5x40cm
QTY: 8



PROCUREMENT 9
Clothes rack
Specs: metal colored blue
Source: Drakopoulos
Dims: W*D*H:
130*50*210
QTY: 8



PROCUREMENT 10
Mirror
Specs:
Source:
Dim: 40x3x180
QTY: 8



ART
Bed art
Dim: Mural
QTY: 8

DECOR



PROCUREMENT
Carpet
Specs: Traditional greek carpet in yellow
Source: Yfanda
Dim: 170x240
QTY: 16



PROCUREMENT
Brown pillow
Specs: blue fabric (dark/light)
Source: Yellow pillow
Dim: 25x25cm
QTY: 16



PROCUREMENT
Basket
Specs: Rattan
Source: Pasielis tis Pallados
Dim: D 30
QTY: 8



WORKSHOP
Hooks
Specs: upcycled wood
Source:
Dim: D5cm
QTY: 32

PLANTS



PROCUREMENT/ART
Pot
Specs: Painted w/shape
Source: Artemisaris
Dim: D 10
QTY: 8

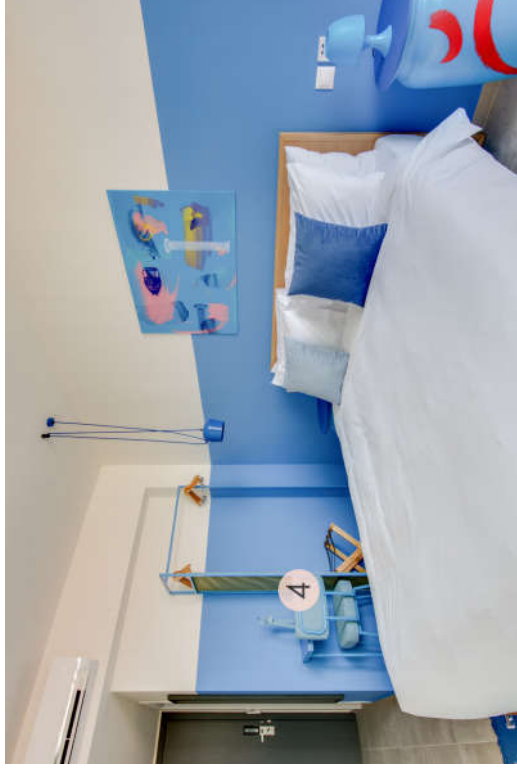


PROCUREMENT
Yucca plant
Specs:
Source:
Dim:
QTY: 8

Standard



- 1 There are (2) blue pots with blue painted wooden top as side tables
- 2 (2) decorative pillows
- 3 (1) blue carpet that can be placed on either side, suggested on the one shown at the photograph
- 4 There is one full height mirror, closet, suitcase rack, chair & decorative tray
- 5 In the cases where there is a balcony there are (2) lounge chairs, with one wooden side table in between



STANDARD (43)

FURNITURE



PROCUREMENT 1

Bed frames for mattresses
 Specs:
 Source: Yfanda
 Dim: 170x240
 QTY: 43



PROCUREMENT 2

Luggage rack
 Specs:
 Source: Drakopoulos
 Dim: 130x50x210
 QTY: 43



PROCUREMENT 3

Desk chair
 Specs: blue fabric
 Source: Drakopoulos
 Dim: TBD
 QTY: 43



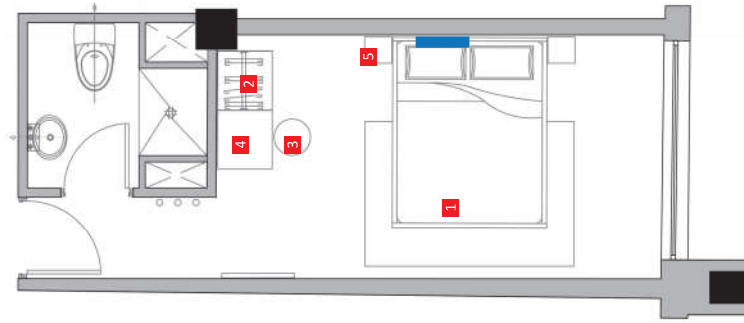
PROCUREMENT 4

Clothes rack w/ desk
 Specs: blue painted
 Source: Drakopoulos
 Dim: 130x50x210
 QTY: 43



PROCUREMENT 5

Side table
 Specs: blue plaster
 Source:
 Dim: D 35 H50
 QTY: 86



DECOR



PROCUREMENT

Carpet
 Specs: Traditional greek carpet in yellow
 Source: Yfanda
 Dim: 170x240
 QTY: 43



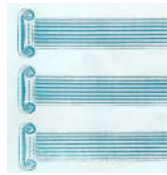
PROCUREMENT

Brown pillow
 Specs: blue fabric (dark/light)
 Source: Yellow pillow
 Dim: 25x25cm
 QTY: 86



PROCUREMENT

Basket
 Specs: Rattan
 Source: Pasielis tis Pallados
 Dim: D 30
 QTY: 43



ART

Bed side
 Dim: A1 size
 QTY: 43



PROCUREMENT

Mirror
 Specs:
 Source: Leroy Merlin
 Dim: 40x3x180
 QTY: 43



WORKSHOP

Hooks
 Specs:
 Source:
 Dim:
 QTY: 43

PLANTS



PROCUREMENT

Jade plant
 Specs:
 Source: Artemisaris
 Dim: D10
 QTY: 43



PROCUREMENT

Pot
 Specs:
 Source: Artemisaris
 Dim: D 10
 QTY: 43

Standard Twin



1 There are (2) yellow side tables

2 (2) decorative pillows

3 (1) brown carpet that can be placed on either side, suggested on the one shown at the photograph

4 There is one full height mirror, closet, suitcase rack

5 In the cases where there is a balcony there are (2) lounge chairs, with one wooden side table in between



STANDARD TWIN (13)

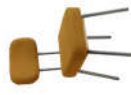
FURNITURE



PROCUREMENT 1
 Bed frames for mattresses
 Specs: Oak wood
 Source: Drakopoulos
 Dim: 90x200
 QTY: 26



PROCUREMENT 2
 Luggage rack
 Specs:
 Source: Drakopoulos
 Dim:
 QTY: 13



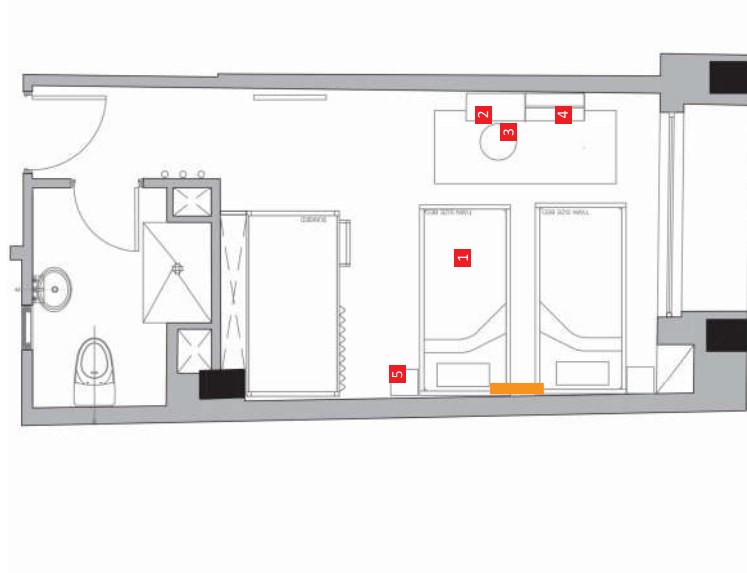
PROCUREMENT 3
 Desk chair
 Specs: yellow fabric
 Source: Drakopoulos
 Dim: TBD
 QTY: 13



PROCUREMENT 4
 Specs: blue painted
 Source: Drakopoulos
 Source: Drakopoulos
 Dim: 130x50x210
 QTY: 13



PROCUREMENT 5
 Bedside table
 Specs: yellow
 Source: Pafos
 Dim: 30x40x50
 QTY: 24



DECOR



PROCUREMENT
 Carpet
 Specs: Traditional greek
 carpet in yellow
 Source: Yfanda
 Dim: 140x210
 QTY: 13



PROCUREMENT
 Brown pillow
 Specs: yellow fabric (dark/
 light)
 Source: Yellow pillow
 Dim: 25x25cm
 QTY: 26



ART
 Bed side
 Dim: A1 size
 QTY: 26



PROCUREMENT
 Mirror
 Specs:
 Source: Leroy Merlin
 Dim: 40x3x180
 QTY: 13



WORKSHOP
 Hooks
 Specs:
 Source:
 Dim:
 QTY: 13



PROCUREMENT
 Basket
 Specs: Rattan
 Source: Pasialis tis Pallados
 Dim: D 30
 QTY: 13

PLANTS



PROCUREMENT
 Pot
 Specs:
 Source: Artemisaris
 Dim: D 10
 QTY: 13



PROCUREMENT
 Jade plant
 Specs:
 Source: Artemisaris
 Dim:
 QTY: 13

HYBRID (11)

FURNITURE



PROCUREMENT 1
Selina's Bunk beds
Specs: Light wood veneer
Source: Pafos
Dim: QTY. 11



PROCUREMENT 2
Bed frames for mattresses
Specs: Yellow
Source: Yanda
Dim: 80x200
QTY. 22



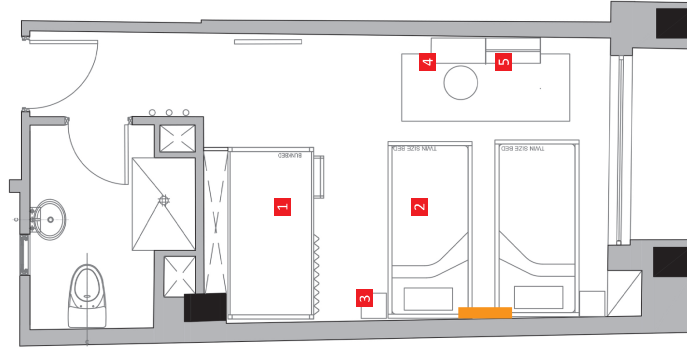
PROCUREMENT 3
Bedside table
Specs: yellow
Source: Yanda
Dim: 30x40x50
QTY. 22



PROCUREMENT 4
Luggage rack
Specs:
Source: Drakopoulos
Dim: 130x35x210
QTY. 11



PROCUREMENT 5
Clothes rack colored
Specs:
Source: Drakopoulos
Dim: 130x35x210
QTY. 11



DECOR



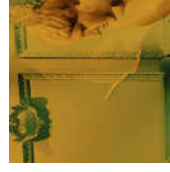
PROCUREMENT
Carpet
Specs: Traditional greek carpet in yellow
Source: Yanda
Dim: 80x200
QTY. 11



PROCUREMENT
Bed pillow
Specs: Yellow
Source: Yellow pillow
Dim: 25x25
QTY. 22



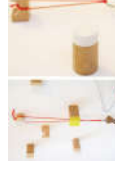
PROCUREMENT
Basket
Specs:
Source: D.40
Dim: D.40
QTY. 11



PROCUREMENT
Bed side
Dim: A1 size
QTY. 22



PROCUREMENT
Mirror
Source:
Dim: 40x3x180
QTY. 11



WORKSHOP
Item / activity
Specs:
Source:
Dim:
QTY.22

PLANTS



PROCUREMENT
Pot
Specs:
Source: Artemisaris
Dim: D.10
QTY. 11



PROCUREMENT
Jade plant
Specs:
Source:
Dim:
QTY. 11

Micro



1 There are (2) yellow side tables

2 (2) decorative pillows

3 (1) brown carpet that can be placed on either side, suggested on the one shown at the photograph

4 There is one full height mirror, closet, suitcase rack

5 At the balcony there are (2) red chairs, with one white table



MICRO (12)

FURNITURE



PROCUREMENT 1
 Bed frames for mattresses
 Specs: drakopoulos
 Source: drakopoulos
 Dim: 140x200
 QTY: 12



PROCUREMENT 2
 Luggage rack
 Specs:
 Source: drakopoulos
 Dim: 110x50x210
 QTY: 12



PROCUREMENT 4
 Bedside table
 Specs: yellow
 Source: Pafos
 Dim: 30x40x50
 QTY: 24



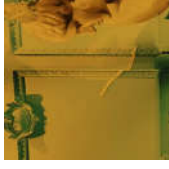
PROCUREMENT 3
 Clothes rack w/desk
 Specs: yellow
 Source: Drakopoulos
 Dim: 110x50x210
 QTY: 12



PROCUREMENT
 Carpet
 Specs: Traditional greek carpet in yellow
 Source: Yfanda
 Dim: 140x210
 QTY: 12



PROCUREMENT
 Bed pillow
 Specs: Yellow
 Source: Yellow pillow
 Dim: 25x25
 QTY: 13



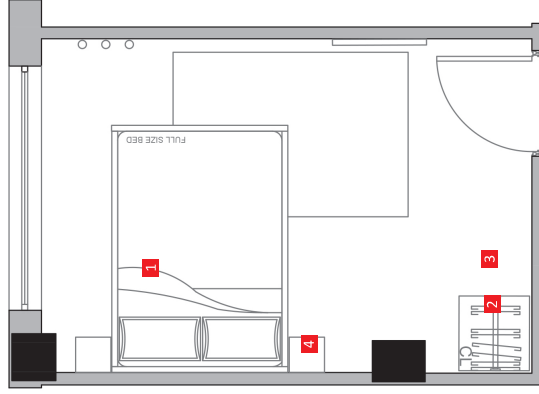
ART
 Bed side
 Dim: A1 size
 QTY: 24



WORKSHOP
 Hooks
 Specs:
 Source:
 Dim:
 QTY: 24



PROCUREMENT
 Mirror
 Specs:
 Source:
 Dim: 40x3x180
 QTY: 12



PROCUREMENT
 Jade plant
 Specs:
 Source: Artemisaris
 Dim: D 10
 QTY: 13

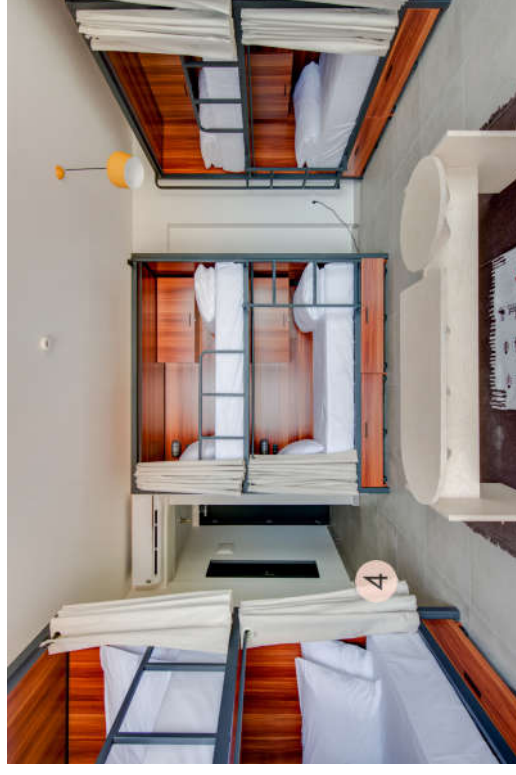


PROCUREMENT
 Pot
 Specs:
 Source: Artemisaris
 Dim: D 10
 QTY: 13

Dorm



- 1 (1) bench made by workshop
- 2 (2) lounge chairs & (1) side table at the exterior
- 3 (1) lounge chairs & (1) side table at the interior
- 4 (2) baskets
- 5 (1) large brown carpet



COMMUNITY ROOM (14)

FURNITURE



PROCUREMENT 1
Selina's Bunk beds
Specs: Light wood veneer
Source: Pafos
Dim:
QTY. 11



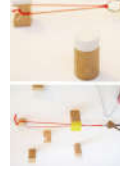
WORKSHOP/ART 2
Wooden bench
Dims: 40x90x50cm
Qty.: 14



PROCUREMENT
Carpet
Specs:
Source: Tapicap
Dim: 140x200
QTY. 14



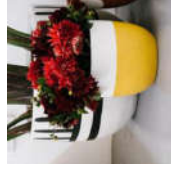
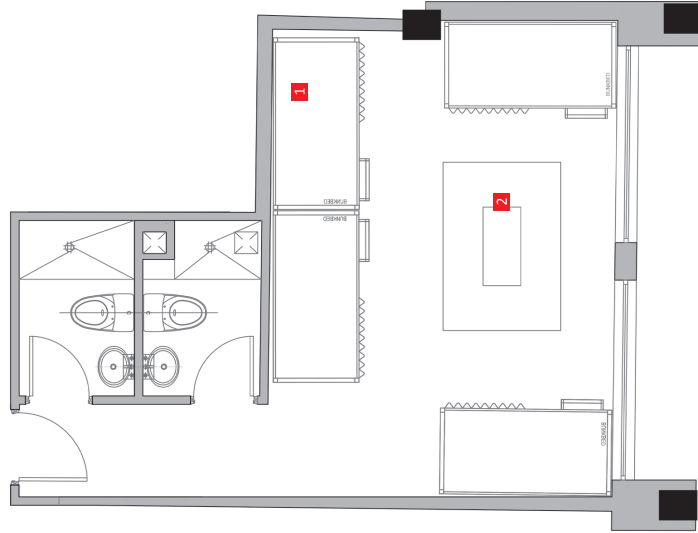
PROCUREMENT
Basket
Specs:
Source:
Dim: D 40
QTY. 14



WORKSHOP
Item / activity
Specs:
Source:
Dim:
QTY. 94



PROCUREMENT
Mirror
Specs:
Source:
Dim: 40x3x180
QTY. 14



PROCUREMENT
Pot
Specs:
Source: Artemisaris
Dim: D 10
QTY. 14



PROCUREMENT
Yucca plant
Specs:
Source:
Dim:
QTY. 14

VEGETACIÓN Y CUIDADOS | VEGETATION AND CARES

Eleagnus

CARE

Best planted in an open sunny site but will tolerate semi-shaded. Thrives in any reasonable well-drained, fertile garden soil. Tolerates clay, chalk and dry conditions. Needs to water 3 times per week. If the soil is damp, it doesn't need to be watered.



Septhera

CARE

Schefflera plants prefer medium-light, meaning they should be kept in bright light, but the light should not be direct. The Schefflera plant should be fertilized in the spring and fall, 1-2 times per week.



Metrosideros

CARE

Metrosideros tolerates dry air and good ventilation. However, it is desirable to spray in the summer every 2-3 days. Watering with soft water in summer once a week, but very abundantly, and in winter every 8-10 days.



Palm kentia

CARE

As in indoor care, the Kentia needs a slightly moist soil. Watering every day at when the top soil is already dry.



Ligustrum Texanum

CARE

Ligustrum plants, often called "privet," are exceptionally easy to grow and care for when planted right and in the right spot. Best planted in an open sunny site but will tolerate semi-shaded. Thrives in any reasonable well-drained, fertile garden soil. Tolerates clay, chalk and dry conditions. Needs to water 3 times per week. If the soil is damp, it doesn't need to be watered.



Bamboo

CARE

As an outdoor plant it needs watering 3 times per week.



VEGETACIÓN Y CUIDADOS | VEGETATION AND CARES

Lavender



CARE

lavender is a drought tolerant plant, but will need regular watering for the first 3 months until it becomes acclimated to its new home. Do not water everyday. Check it every couple of days to see what it may need. Too much water will kill your plant.

Fern



CARE

As a rule, they prefer 1 to 2 inches of water a week, but this also depends on the soil and the growth rate. Ferns grown in light, sandy soil require more frequent watering than those grown in dense clay soil. During summer months in needs watering 2 times per week.

Lemon Tree



CARE

Lemon trees don't like wet feet, and as a general rule, they don't need much watering. Plus, watering a lemon tree's foliage and fruit can make it more susceptible to disease. Water any newly planted lemon trees every other day for the first week, and then one or two times a week for two months.

Olive Tree



CARE

To keep in good health, olive trees need at least two full waterings to field capacity (full depth of roots eg. 75 cm (2'6") in 10-year-old trees), each winter. If water can be applied more regularly during winter or at other times of the year then this will be most beneficial and will result in increased crops.

TALLER CREATIVO | CREATIVE WORKSHOP
PLEASE VISIT [LINK](#)

ARTE | ART
PLEASE VISIT [LINK](#)

PREGUNTAS FRECUENTES | FAQs

PREGUNTAS FRECUENTES | FAQs

DISEÑO - PREGUNTAS FRECUENTES | DESIGN FAQs

Qué pasa si el layout final de mobiliario no es el más eficiente y queremos proponer otra distribución que funciona mejor con la locación?

R/ Por favor llena este formulario: [OPS-Design Request Form](#)

Las instrucciones están dentro del formulario. En la siguiente página encontrará una breve descripción.

Qué pasa si necesitamos crear un nuevo espacio, por ejemplo una tienda de explore, cuando la locación ya está operando?

R/ Por favor llena este formulario: [OPS-Design Request Form](#)

Las instrucciones están dentro del formulario.

Qué pasa si algún mueble, cortina, objeto se daña y necesitamos comprarlo nuevamente?

R/ En la página 6 de este manual, se encuentra un link hacia el listado de FF&E de este proyecto, donde podrás encontrar la referencia exacta del ítem que necesitas, costo, proveedor y en qué lugar de la locación debe ubicarse.

Si deseas agregar un nuevo ítem en algún espacio, por favor ponte en contacto con la Diseñadora de Interiores de tu proyecto para revisión y aprobación.

Qué puedo hacer si algún objeto de Creativo comienza a desgastarse?

R/ Ten en consideración que todos los objetos de Creativo necesitan mantenimiento. En este manual hay un capítulo específico donde el Workshop Manager explica cómo mantener en buen estado cada pieza que ha sido entregada.

Si alguna de las piezas falla definitivamente, por favor ponte en contacto con el Design Country Lead (o Diseñadora de Interiores si no hay DCL) para consultar y proceder.

A quién puedo contactar en caso de necesitar Diseño o asistencia de Arte?

R/ Puedes contactar al Design Country Lead (o Diseñadora de Interiores si no hay DCL), y copiar a Juli (juliana@selina.com) en el email.

Los contactos los puedes encontrar en la página 4 de este manual.

What if the final furniture layout was not the most efficient one and we want to propose another one that works best with the location and flow?

A/ Please send an [OPS-Design Request form](#)

Instruction on the same form. In the next page you can find a short description.

What if we need to create a new space (like a Retail store) after the location opens?

Please send an [OPS-Design Request form](#)

Instruction on the same form. In the next page you can find a short description.

What if the curtains /sofa /chairs, etc. brake and we need to buy new ones?

A/ On page 6 of this manual you can find the FF&E list left by the Interior Designer of your project, you should be able to see the exact reference of the item, where to purchase, the cost and where to place it in the location.

If you wish to add a new item (chair, table, etc) please contact the Interior Designer of your project for consultation and approval.

What if items made by the Workshop are starting to wear out?

A/ Please consider that all the works made by the workshop will need maintenance. In the Design Handover Manual and Maintenance Guideline package you will find a document explaining how to upkeep and maintain each piece created by the workshop. You must follow these guidelines so to give a long life to each item produced.

If anything eventually dies out please contact the Design Country Lead (or ID in case there is no DCL) to consult on how to proceed.

Who can I contact in case we need Design or Art assistance?

A/ You can contact the Design Country Lead or ID in case there is no DCL, and copy Juliana Lujan (juliana@selina.com) on the email.

Names and info about each person that participated in this project are described on page 4 of this manual.

Design Request para locaciones activas | Design Request for Operative Locations

En el momento que el GM quiera hacer una petición, cambio o requerimiento en el diseño o en el arte de su locación asignada, o crea que hay algún ítem, mueble u objeto que está haciendo falta de parte del Taller Creativo, estaremos felices de saber de ti.

Para presentar tu Requerimiento de Diseño / Design Request, te pedimos que [completes el formulario que ponemos en este link](#) y lo envíes a la Diseñadora de Interiores vía email.

Las instrucciones sobre cómo llenar el formulario se encuentran dentro del mismo.

No olvides que para cada Design Request, el equipo de Diseño tiene 3 días laborales hábiles para dar respuesta.

Any time that the GM wishes to request a change in the design or art of his/her location, or believe something is missing by Creative Design, we will be happy to get your request.

To submit your Design Request, please [complete the form on this link](#) and send it to the Interior Designer by email. Further instructions on the form.

Keep in mind that Design Team has 3 business days to give response to a Design Request.

ACTION PATH	TIME ALLOWANCE
1 Prepare the Design Request fully	
Send this request via email to the Interior Designer that executed the project as well as the Country Lead Designer	3 business days for ID to respond
If the ID or CLD did not respond send this request by email to Hilla Tayas and Juliana Lujan	2 business days for a response
If Hilla or Juliana did not respond send a whatsapp to Hilla Tayas	1 business days for a response
If no response you may proceed with your own plan of action	

ARTE - PREGUNTAS FRECUENTES | ART FAQs

Qué puedo hacer si tenemos un evento y queremos tener intervenciones de arte?

R/ Completa un [OPS-Design.Request Form](#) y envíalo vía email a la Diseñadora del país. Cuando lo vayas a enviar, asegúrate de incluir una fotografía del espacio que quieres intervenir.

Qué puedo hacer si hay algún mural en muy mal estado o que no nos gusta y lo queremos cambiar?

R/ Completa un [OPS-Design.Request Form](#) y envíalo vía email a la Diseñadora del país. Cuando lo vayas a enviar, asegúrate de incluir una fotografía del mural que quieres cambiar.

Qué puedo hacer si hay un muro triste y vacío que pensamos que podría cobrar vida con una intervención de arte?

R/ Completa un [OPS-Design.Request Form](#) y envíalo vía email a la Diseñadora del país. Cuando lo vayas a enviar, asegúrate de incluir una fotografía del mural que quieres cambiar.

What if we have an event and we want Art intervention?

A/ Please complete and send an [OPS - Design Request form](#) to the . Instruction on the same form. On the email when you send the Design Request, please include a picture of the space you want to intervene.

What if a mural is falling apart, or there is some mural that we definitely don't like?

A/ Please send an [OPS - Design Request form](#). Instruction on the same form. On the email when you send the Design Request, please include a picture of the piece of art you want to change.

What if there's a wall that looks empty and could use some art?

A/ Please send an [OPS - Design Request form](#). Instruction on the same form. On the email when you send the Design Request, please include a picture of the wall you want to change.